

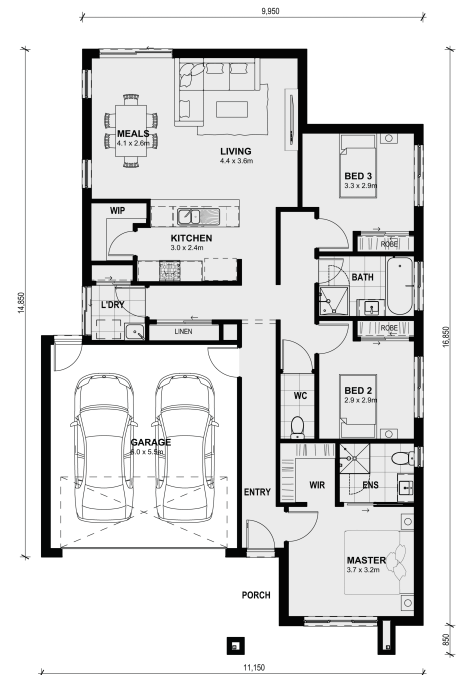


Lot 820 Furze Road OFFICER VIC 3809

Land Size: 313 m² House Size: 174 m²

Combined living and entertaining area makes spending time with family and friends easy. Featuring a spacious master suite including the essential walk-in wardrobe. Further two bedrooms share the central bathroom with separate WC and internal access to the double car garage makes this a practical and attractive home.

- â€¢ Turn Key Option includes Front and back landscaping,
- â€¢ Block out Blinds
- â€¢ Clothesline
- â€¢ Letterbox
- â€¢ Colour Through driveway.
- â€¢ Downlights throughout
- â€¢ Generous Flooring throughout...



\$650,607

John Lynch

E: johnl@mimosahomes.com.au

P: 0455825096