



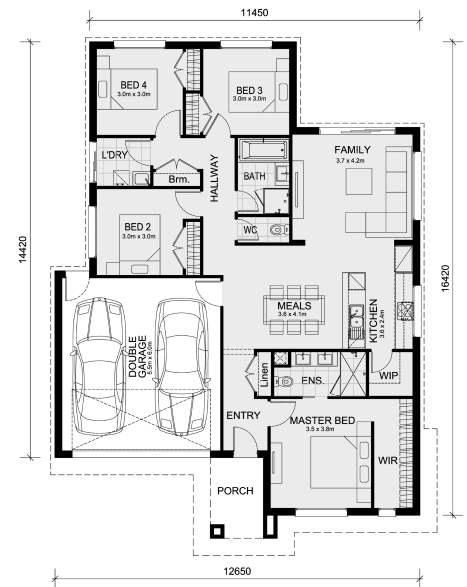
# LOT 606 PORTULACA AVENUE MANOR LAKES VIC 3024

**Land Size: 308 m<sup>2</sup> House Size: 176 m<sup>2</sup>**

The Lismore 192 House and Land Package!

- \* NCC Compliant Floorplan
- \* Mimosa Homes Added Value Inclusions:
  - 7 Star Rating!
  - 2700mm Ceiling Hight
  - Inclusive of site costs & connections with H1 class slab as per standard inclusions!
  - Quality floor coverings throughout entire home!
  - Double Glazed Awning windows
  - Downlights Through out the house!
  - 40mm Vitrified Compact Surface benchtop to kitchen!
  - 900mm S/S upright oven and cook top with S/S canopy rangehood!
  - Stainless steel Dishwasher and Microwave with trim kit!
  - Overhead cupboards & wine rack! (Design specific)
  - Flexible floor plans & so much more!
  - 3.5kW Solar System!
  - Evaporative Cooling Unit!
  - Home Alarm System

CONTACT BUILDER DIRECT ! MAULIK 0430 884 855...



# \$627,990

**Maulik Patel**

E: [maulik@mimosahomes.com.au](mailto:maulik@mimosahomes.com.au)

P: 0430884855