

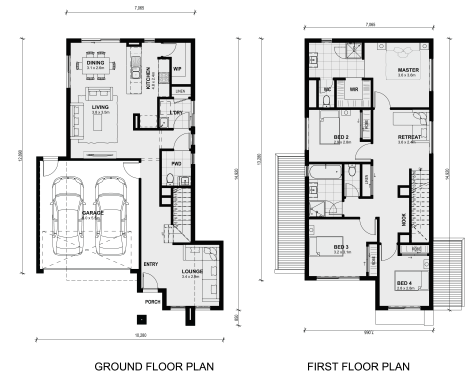


 4
  2
  2

LOT 43824 BUTTERFLY CRESCENT (HIGHLANDS ESTATE) CRAIGIEBURN VIC 3064

Land Size: **House Size: 215 m²**

The distinctive features of the Avoca 232 is the large bedrooms located on the first floor, positioned with a third living area that truly elevates your modern lifestyle. On the ground floor is a front lounge, the perfect getaway to read in peace, a powder room and an open kitchen meals and dining area allowing you more time to entertain with friends and family.



- *Inclusive of site costs & connections with H1 class slab as per standard inclusions!
- *Range of facades including feature render!
- *Quality floor coverings throughout entire home!
- *Higher ceilings 2550mm!
- *Front and rear landscaping
- *Block-out blinds (excludes sliding doors and obscure glazed windows)
- *Coloured concrete to driveway (up to 30m2)
- *Letterbox
- *Clothesline
- *Downlights to living areas!
- *Stone bench top to kitchen!
- *900mm S/S upright oven and cook top with S/S canopy rangehood
- *Stainless steel Dishwasher and Microwave with trim kit!
- *Overhead cupboards (Design specific)
- *Remote control panel sectional lift gara...

\$670,000

Karan Lakhan

E: karanl@mimosahomes.com.au

P: 0420255013