



4 2 2

## Lot 4267 Sensra Jubilee Estate WYNDHAM VALE VIC 3024

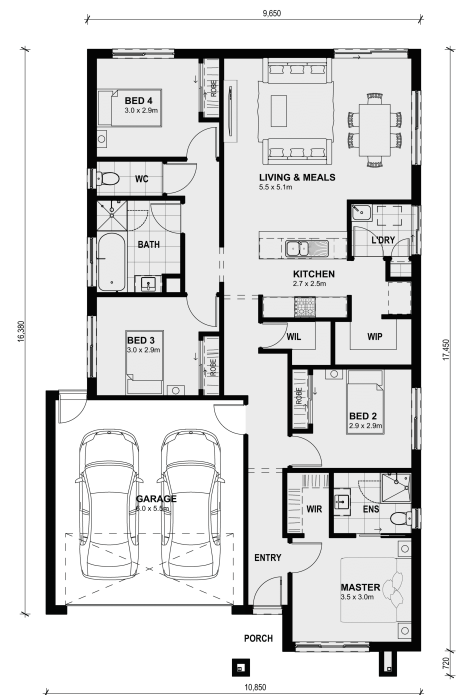
**Land Size: 327 m<sup>2</sup> House Size: 175 m<sup>2</sup>**

This functional modern home is practical and large enough for a growing family. With four bedrooms, three with built in robes and the master bedroom with a walk-in wardrobe and ensuite, a walk-in linen and large walk-in pantry, the Bolinda 187 is the perfect home.

Price Includes:

- 7 Star Energy Rating
- 3.5KW Solar PV System
- Fixed Site Costs
- Double Glazed Windows Throughout
- Single Glazing to All Doors throughout
- Solar Hot Water system
- Coloured Concrete Driveway
- Floor Coverings
- 20mm VCS Benchtops to kitchen
- Split A/C
- Landscaping to Front & Back
- Roller Blinds
- Fold down clothesline
- Letterbox
- Flyscreens
- Remote control garage door

Call now to secure this package!



# \$603,230

**Max Gutierrez**

E: [max@mimosahomes.com.au](mailto:max@mimosahomes.com.au)

P: 0422926349