



4 2 2

LOT 3502 MAMIC BLVD FRASER RISE VIC 3336

Land Size: 400 m² House Size: 207 m²

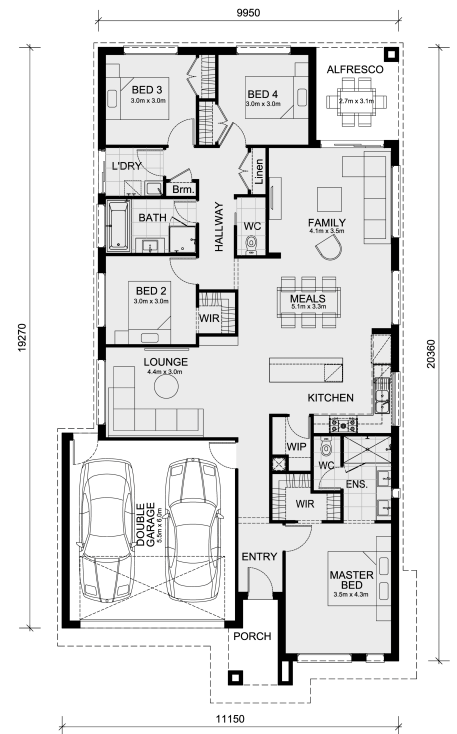
The Leemore 221 House and Land Package!

* Mimosa Homes Added Value Inclusions:

- Inclusive of fixed site costs & connections !
- Quality floor coverings throughout entire home!
- Higher ceilings 2790mm to ground floor!
- Double Glazed Awning windows
- Downlights to living areas!
- 40mm Vitrified Compact Surface benchtop to kitchen!
- 900mm S/S upright oven and cook top with S/S canopy rangehood!
- Stainless steel Dishwasher and Microwave with trim kit!
- Overhead cupboards & wine rack! (Design specific)
- Remote control panel sectional lift garage door!
- 7 star energy with solar hot water!
- Flexible floor plans & so much more!

CALL BUILDER DIRECT! 0400 919 963

All plans and facades are indicative concepts only and are not intended to be accurate depictions. Mimosa Homes reserves the right to amend plans specifications and price without notice. Package prices are based on a standard facade, standard inclusions, the availability of suitable land for development and ...



BRAND NEW DESIGN

\$721,000

Bianca Hablas

E: biancah@mimosahomes.com.au

P: 0400919963