



4  2  2 

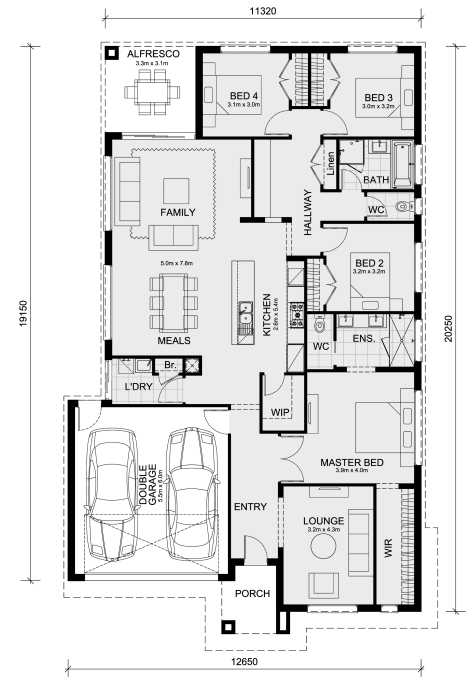
## Lot 2754 Warrally Grange Estate Saba 250 MOUNT DUNEED VIC

**3217**  
Land Size: 435 m<sup>2</sup> House Size: 235 m<sup>2</sup>

- Council and developer requirements
- 7 star energy with solar hot water!
- 3.52kw photovoltaic solar system (battery ready) installed
- Double Glazing throughout
- LED downlights to the entire home
- 20mm stone benchtop to bathroom and ensuite
- 40mm stone benchtop to kitchen
- tiled showerbase to ensuite and bathroom
- brick infills
- Inclusive of site costs & connections with H1 class slab as per standard inclusions!
- Low Profile Roof tiles
- Low-profile Evaporative cooling
- NBN Provision
- Higher ceilings 2550mm!
- 900mm S/S upright oven and cook top with S/S canopy rangehood!
- Range of facades including feature render!
- Quality floor coverings throughout entire home!
- Stainless steel Dishwasher and Microwave with trim kit!
- Overhead cupboards & wine rack! (Design specific)
- Remote control panel sectional lift garage door!
- Flexible floor plans & so much more!

Call Beau 0435 123 663

All plans and facades are indicative concepts only and are not intended to be accurate...



SAVE \$\$\$ ON STAMP DUTY!!!

**\$779,894**

**Beau Huppert**

E: [beau@mimosahomes.com.au](mailto:beau@mimosahomes.com.au)

P: 0435123663