



4  2  2 

Lot 2114 Windermere Estate MAMBOURIN VIC 3024

Land Size: 448 m² House Size: 235 m²

The Saba 250 House and Land Package!

* NCC Compliant Floorplan

Double Advantage Promotion - Single Luxe Pack

*Low profile roof tiles & Low profile evaporative cooling unit

*Fibre optic provision & *LED downlights to entire home

*2700 ceiling height

*40mm stone benchtop to kitchen

*20mm stone benchtop to bathroom & ensuite

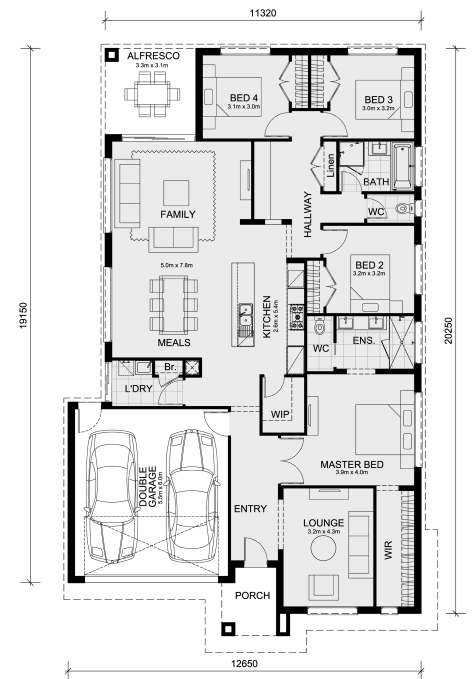
*Tiled shower base *Home Alarm System

*600mm single towel rails or rings & toilet roll holders

*800mm wide laminate double door cabinet with 32mm laminate benchtop with insert trough to laundry

Mimosa Homes Added Value Inclusions:

- Inclusive of site costs & connections with H1 class slab as per standard inclusions!
- Quality floor coverings throughout entire home!
- Higher ceilings 2550mm to ground floor!
- Double Glazed Awning windows
- Downlights to living areas!
- Vitrified Compact Surface benchtop to kitchen!
- 900mm S/S upright oven and cook top with S/S canopy rangehood!
- Stainless steel Dishwasher and Microwave with trim kit!
- Overhea...



SAVE \$\$\$ ON STAMP DUTY!!!

\$697,579

Jay Yu

E: jay@mimosahomes.com.au

P: 0414416828