



## Saba 250

 4
  2
  2

## Lot 20108 Maywood Road MANOR LAKES VIC 3024

**Land Size: 448 m<sup>2</sup> House Size: 235 m<sup>2</sup>**

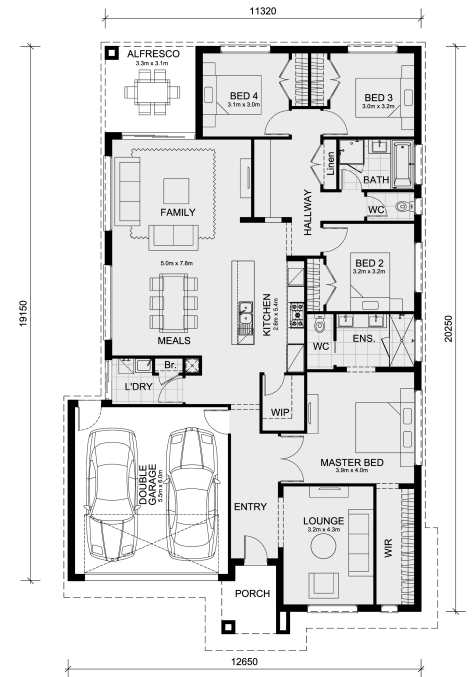
NCC Price Pause Promotion

\*NCC Price rewind price back to before May 1 - minus \$10,000

- \*Low profile roof tiles
- \*Low profile evaporative cooling unit
- \*Fibre optic provision
- \*Brick infills to side and rear of home
- \*LED downlights to entire home
- \*40mm stone benchtop to kitchen
- \*20mm stone benchtop to bathroom & ensuite
- \*Tiled shower base to bathroom & ensuite
- \*600mm single towel rails or rings & toilet roll holders
- \*800mm wide laminate double door cabinet with 32mm laminate benchtop with insert trough to laundry

FREE Added Value

- Inclusive of site costs & connections with H1 class slab as per standard inclusions!
- Quality floor coverings throughout entire home!
- Higher ceilings 2550mm to ground floor!
- Double Glazed Awning windows
- Downlights to living areas!
- Vitrified Compact Surface benchtop to kitchen!
- 900mm S/S upright oven and cook top with S/S canopy rangehood!
- Stainless steel Dishwasher and Microwave with trim kit!
- Overhead cupboards & wine r...



**SAVE \$\$\$ ON STAMP DUTY!!!**

# \$712,819

**Jay Yu**

E: [jay@mimosahomes.com.au](mailto:jay@mimosahomes.com.au)

P: 0414416828