



LOT 1539 Tullamore Street (Willow Estate) GISBORNE VIC 3437

Land Size: 504 m² House Size: 269 m²

The Mandurah 287 House and Land Package!

* NCC Compliant Floorplan

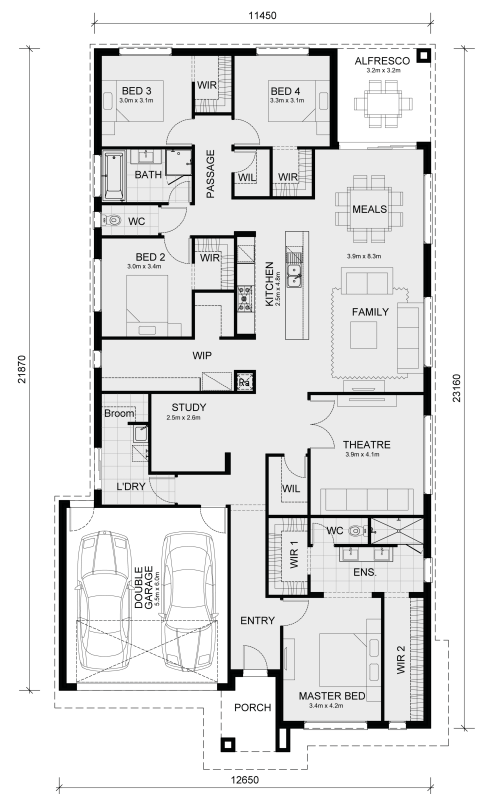
* Mimosa Homes Added Value Inclusions:

- Inclusive of site costs & connections with H1 class slab as per standard inclusions!
- Quality floor coverings throughout entire home!
- Higher ceilings 2550mm to ground floor!
- Double Glazed Awning windows
- Downlights to living areas!
- Vitrified Compact Surface benchtop to kitchen!
- 900mm S/S upright oven and cook top with S/S canopy rangehood!
- Stainless steel Dishwasher and Microwave with trim kit!
- Overhead cupboards & wine rack! (Design specific)
- Remote control panel sectional lift garage door!
- 7 star energy with solar hot water & Solar Panels!
- Flexible floor plans & so much more!

Call Senada Klempic directly to secure this package! - 0411403640

*Titled Land, Developer Rebate included in pricing.

All plans and facades are indicative concepts only and are not intended to be accurate depictions. Mimosa Homes reserves the right to amend plans s...



\$698,856

Senada Klempic

E: senada@mimosahomes.com.au

P: 0411403640