



3 2 2

Lot 128 Prenton Ave Tulloh St Estate STRATH TULLOH VIC

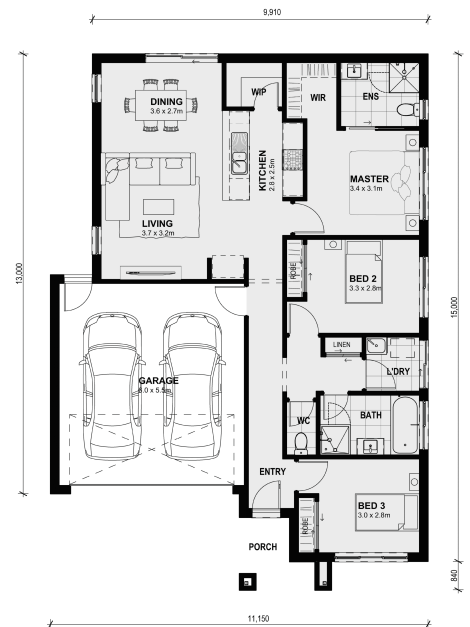
3338
Land Size: 312 m² House Size: 150 m²

The combined living, meals and kitchen areas make spending time with family and friends easy in the Boho 161. With two separate bedrooms that share a bathroom located at the rear of the home and a large master bedroom with a walk-in wardrobe and ensuite at the rear of the home. The Boho 161 has the ability to fit on smaller blocks whilst not compromising on functionality.

Price Includes:

- 7 Star Energy Rating
- 3.5KW Solar PV System
- Fixed Site Costs
- Double Glazed Windows Throughout
- Single Glazing to Sliding/Stacker doors
- Rendered ACC walls to all elevations
- Solar Hot Water system
- Coloured Concrete Driveway
- Floor Coverings
- 20mm VCS Benchtops to kitchen
- Split A/C
- Landscaping to Front & Back
- Roller Blinds
- Fold down clothesline
- Letterbox
- Flyscreens
- Remote control garage door

Call now to secure this package!...



\$574,596

Max Gutierrez

E: max@mimosahomes.com.au

P: 0422926349