



Lot 106 Valley Rd Tulloh St Estate STRATHTULLOH VIC

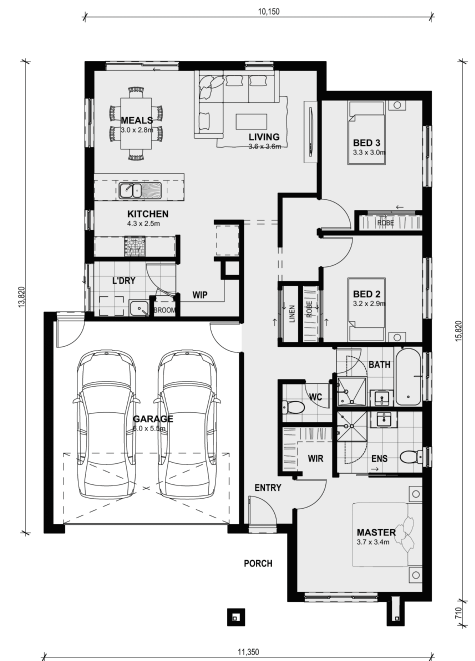
3338
Land Size: 316 m² House Size: 160 m²

Ideal for small blocks of land, the Seymour 172 features a large master bedroom with a walk-in wardrobe, 2 spacious bedrooms, laundry, double car garage, walk-in pantry and a large open living Meals/Kitchen/Family area making the Seymour 172 perfect for couples, investors or small families.

Price Includes:

- 7 Star Energy Rating
- 3.5KW Solar PV System
- Fixed Site Costs
- Double Glazed Windows Throughout
- Single Glazing to Sliding/Stacker doors
- Solar Hot Water system
- Coloured Concrete Driveway
- Floor Coverings
- 20mm VCS Benchtops to kitchen
- Split A/C
- Landscaping to Front & Back
- Roller Blinds
- Fold down clothesline
- Letterbox
- Flyscreens
- Remote control garage door

Call now to secure this package!...



\$583,448

Max Gutierrez

E: max@mimosahomes.com.au

P: 0422926349