



4 2 2

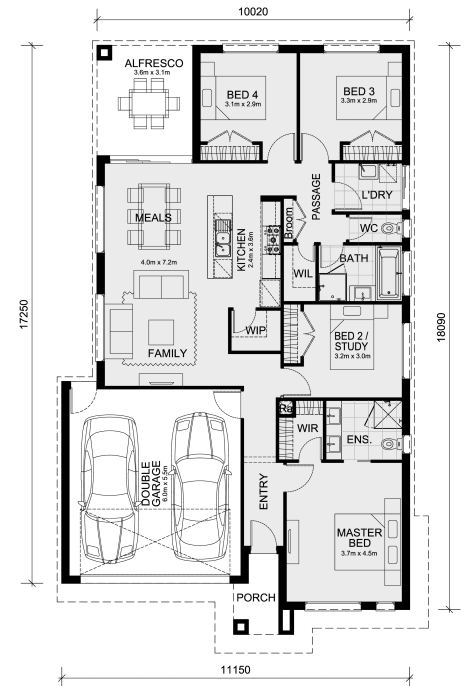
## 201 Lot 2644 Fremont Street CLYDE NORTH VIC 3978

**Land Size: 313 m<sup>2</sup> House Size: 186 m<sup>2</sup>**

A designer kitchen with walk-in pantry is the heart of the Enfield home. It overlooks the large living-dining area that leads to a wonderful alfresco. The kids have two secluded bedrooms at the rear of the home adjacent to the main bathroom with walk-in linen cupboard. The master bedroom suite is located at the front of the house where you can indulge in a walk-in robe and large ensuite.

CALL BUILDER DIRECT!

All plans and facades are indicative concepts only and are not intended to be accurate depictions. Mimosa Homes reserves the right to amend plans specifications and price without notice. Package prices are based on a standard facade, standard inclusions, the availability of suitable land for development and does not include developer/estate requirements. Facade and inclusion images shown may not be standard and may not be included in the price of the home. All dimensions are approximate. Package prices do not include landscaping, fencing, decking, planter boxes, driveways and pat...



**\$664,000**

**Chamrin Bou**

E: [chamrin@mimosahomes.com.au](mailto:chamrin@mimosahomes.com.au)

P: 0469767687